

STANDARD PAGE - FLEET VEHICLES 8475

(Use separate page for each package)

DEALER NAME - Creative Bus Sales Inc.

Specify State's Vehicle Item Number: Cab and Chassis 3.5		
Specify MANUFACTURER, MODEL NAME, YEAR & BODY MODEL CODE:	Base Price for RENO/CARSON CITY	Base Price for LAS VEGAS
Starcraft AllStar 25, 2017, Shuttle Bus	\$44,114.00	\$44,114.00
State vehicle miles per gallon (MPG): 9 MPG City, 14 Highway		
State manufactures warranty: 3 yr., 36,000 Bumper to Bumper, 5 year 60,000 Powertrain		
Specify engine size and emission rating: 6.8 Liter V10, 50 State Emissions		
Includes Minimum Standard Equipment Listed: <input type="checkbox"/> Yes <input checked="" type="checkbox"/> No If no, state exceptions: (Refer to page 6 of bid)		
Exterior Color: List available colors: White		
Seats, Cloth: List available colors: #057 New Charcoal Olefin #056 New Sand Olefin #058 New Wine Olefin #055 New Blueberry Olefin		
GVW: 14,500 <small>(When Applicable)</small>	WHEELBASE: 159" - 190" <small>(When Applicable)</small>	

OPTION PACKAGE PAGE ~ FLEET

(Use separate page for each package)

DEALER NAME Creative Bus Sales Inc.

Specify State's Vehicle Item Number: Cab and Chassis 3.5 <small>(i.e. 1.1 Sedan; Full size; 4 door; 6 passenger)</small>		
Option Package Name/Code:		
List Equipment Features Below:		
ADA Package Cab and Chassis 3.5		\$8,683
Braun Century WC #800, Dual Lift Door, 403 Interlock Fast Idle		
2- Sets Q'Straint Deluxe Retractable Tiedowns		
Right Hand Grab Rail, Roof Hand Rail		
16 Mid High Seats 2 Single Flip Sets		
Includes \$1000 Mobilty Disocount from Ford		
Safety Package Cab and Chassis 3.5		\$204
5# Fire Extinguisher, Reflectors, First Aid Kit and Back Up Alarm		
Tour Package 21 Cab and Chassis 3.5		\$5,943
Rear Luggage Compartment, Roof Escape Hatch		
Overhead Parcel Racks w/Reading Lights		
21 Mid High Seats w/Aisle Side Armrests		

ITEMIZED OPTION PAGE ~ FLEET

(Use separate page for each package)

DEALER NAME Creative Bus Sales Inc.

		DEDUCT AMOUNT
ABS Brake System	Standard	\$-
Air Conditioning	Standard	\$-
Cruise Control	Standard	\$-
Diesel Engine	NA	\$-
Engine Block Heater	Standard	\$-
Four Wheel Drive (4x4)	\$	\$-
Heavy Duty Alternator	Standard	\$-
Hitch Receiver	NA	\$-
Integrated Trailer Brake (3/4 ton only)	NA	\$-
Keyless Entry w/Fob (must have power door locks)	NA	\$-
Limited Slip Differential	\$283	\$-
Paint, Metallic	\$7,000	\$-
Power Mirrors	\$609	\$-
Power Locks	NA	\$-
Power Seats	\$441	\$-
Power Windows	NA	\$-

Radio: AM/FM Stereo, CD	Standard	\$-
Rear Window Wiper	NA	\$-
Seats, Vinyl	No Charge	
Vinyl Colors: Blue, Grey, Maroon		
Skid Plate	NA	\$-
Tilt Steering	Standard	\$-
Tire, Spare, Full Size	Standard	\$-
Trailer Tow Mirrors	NA	\$-
Trailer Tow Package	NA	\$-
FRP Sidewalls	\$330	\$-
FRP Ceiling	\$168	\$-
Vinyl Flooring Gray	\$220	
Rubber Flooring Gray	\$430	
Mor-Ryde Suspension	\$997	\$-
Raised Floor (No Wheel Wells)	\$498	
Heated Remote Exterior Mirrors	\$609	\$-
On Spot Tire Chains	\$4,042	\$-
SS Wheel Inserts	\$262	\$-
Inner Wheel Valve Stem Extenders	\$74	\$-
45,000 BTU AC System	\$3,197	\$-
55,000 BTU Roof Top AC System	\$4,436	\$-
90,000 BTU Roof Top AC System	\$8,573	\$-
35,000 BTU Floor Heater	\$278	\$-
65,000 BTU Floor Heater	\$388	\$-
Insulated Heater Hoses	\$132	\$-
Defroster Fan	\$99	\$-
Rear Door Ajar Buzzer	\$73	\$-
Widow Ajar Alarm	\$95	\$-
Rotary Disconnect Switch	\$110	\$-
Stop Request Sign, Pull Cords and Chime	\$546	\$-
Front Destination Sign - Curtain	\$992	\$-
Side Destination Sign - Curtain	\$920	\$-
LED Front DEST Sign	\$2,757	\$-
LED Side DEST Sign	\$1,380	\$-
Diamond Farebox 2 Vaults	\$1,543	\$-
LED Rear Center Brake Light	\$68	\$-
Page System	\$162	\$-
Rear Egress Door No Windows	\$309	\$-
Rear Egress Door 1 Window	\$288	\$-
Additional Window For Rear Door	\$78	\$-
Roof Hatch	\$278	\$-
Extra Egress Windows	\$53	\$-
Overhead Driver's Storage	\$105	\$-
Overhead Luggage Racks	\$609	\$-
Overhead Handrails	\$273	\$-
Dual Reading Lights (EA)	\$37	\$-
Door Activated Interior Lights	\$37	\$-
Double Wheel Chair Doors	\$1,018	\$-
FVMSS 403 Interlock Fast Idle	\$388	\$-
WC Tiedown Q'Straint Deluxe Retractor (EA)	\$493	\$-
WC Lift Braun #800	\$4,105	\$-
WC Lift Braun #1000	\$4,688	\$-
#5 Fire Extinguisher	\$65	\$-
First Aid Kit	\$55	\$-
Emergency Triangles	\$32	\$-
Back Up Alarm	\$89	\$-
Back Camera and Monitor	\$435	\$-
Interior Convex Mirror	\$42	\$-
RH Grab Rail - Entry Door	\$67	\$-
Stanchion and Modesty Panel Behind Driver	\$136	\$-
Additional Stanchion and Modesty Panel	\$136	\$-
Stanchion Padding Gray or Black	\$47	\$-
High Back Seats (Double)	\$330	\$-
High Back Seat (Single)	\$189	\$-
Mid High Seats (Double)	\$309	\$-
Mid High Seats (Single)	\$178	\$-
Foldaway Seats (Double)	\$829	\$-
Foldaway Seats (Single)	\$577	\$-
Passenger Lap Belts	Standard	\$-
Flip Seat Handi Double (EA)	\$404	\$-
Flip Seat Handi Single (EA)	\$288	\$-
Under Seat Retractable Lap Belts - (EA)	\$67	\$-
Anti Vandal Grab Rails (EA)	\$42	\$-
Armrests Black (EA)	\$31	\$-

Delivery charge for other than Reno or Las Vegas (i.e. Ely) \$ 1.41 per mile.

DEALER NAME Creative Bus S

Specify State's Vehicle Item Number: 3.5 Cab and Chassis

Provide MSRP pricing: \$44,114

Specify MANUFACTURER, MODEL NAME, YEAR & BODY MODEL CODE:	Base Price for RENO/CARSON CITY	Base Price for LAS VEGAS
Starcraft AllStar 25, 2017, Shuttle Bus	\$44,114	\$44,114

► The Allstar Series

STARCRAFT BUS
a division of Forest River, Inc.

► The Allstar Series

STARCRAFT BUS
a division of Forest River, Inc.

► Standard Exterior Feature Highlights

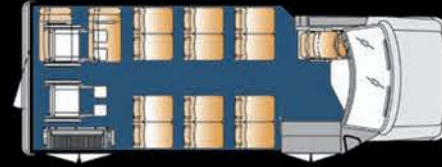
- Fully welded steel cage construction meeting all applicable FMVSS requirements
- "Starview" drivers visibility window in front of entry door
- Electric actuated passenger entry door with full length glass
- 36" wide x 36" high upper double T-Slider tempered safety glass windows with climate control tint
- Black powder coated steel rear bumper
- Rear mud flaps
- Pre-painted white aluminum side, rear walls, skirts
- One-piece seamless FRP (fiberglass reinforced plastic) roof
- Breakaway rearview mirrors with built-in convex
- Sealed LED stop, tail, and turn signal lights with incandescent reverse lights
- Exterior graphics package available in three colors (blue, green or burgundy)

► Standard Interior Feature Highlights

- 93" interior width
- 80" interior floor to ceiling height with standard floor (raised floor is 75")
- Floor and wall seat track for flexible seating
- Black ribbed rubber aisle with gray carpet under the seats
- 5/8" exterior grade plywood flooring
- Ceiling and rear wall fabric for sound abatement
- FRP (fiberglass reinforced plastic) sidewalls for ease of cleaning
- White step nosing
- 1.25" left hand vertical passenger assist rail at entry door
- Printed circuit board with automotive type fuses and LED trouble shooting lights
- Entry door step well lights
- Incandescent driver and passenger area lighting

► Popular Option Highlights

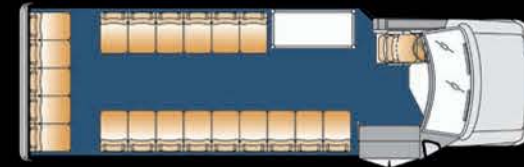
- Stainless steel wheel inserts
- Interior and exterior LED lighting
- Luggage Storage areas (overhead luggage racks with reading lights, interior luggage racks, rear storage area)
- Rear emergency door with window(s)
- Passenger area rear heat and air conditioning
- Complete rubber flooring
- Passenger grab rails
- Padded vinyl or cloth walls and ceiling
- Audio and video systems
- Mid back or high back seating
- ADA and FMVSS compliant wheel chair lifts and securement systems
- Fiberglass side walls, skirts, and rear cap
- Seat belts



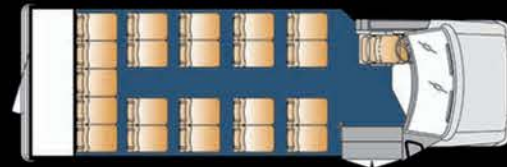
12 Passenger 2 Wheelchair
4 Passenger Foldaway Seats Plus Driver



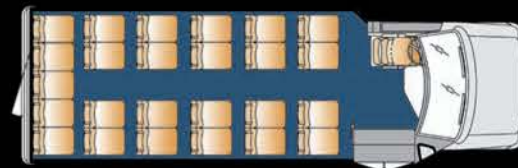
16 Passenger 2 Wheelchair
4 Passenger Foldaway Seats Plus Driver



20 Passenger with Interior Luggage Plus Driver



21 Passenger with Rear Luggage Plus Driver



25 Passenger Plus Driver

Due to our commitment to product quality, specifications and options are subject to change without notice in the interest of product improvement and market changes.



Altoona Tested • 7 Year/200,000 Miles



13501 Benson Ave. Chino, CA 91710
800.326.2877 Fax: 909.465.5529 www.CreativeBusSales.com

► Safety. Performance. Durability.

► The Allstar Series

Safety. Performance. Durability.

STARCRAFT BUS
a division of Forest River, Inc.



► **Safety** is our primary focus at Starcraft Bus, from the 3,000 lbs. seat-pull test to the rigorous 7-year/200,000 mile Altoona testing, passengers can be assured that the Allstar surpasses the most stringent testing. Bus operators can relax knowing that the fully welded steel cage construction offers the best passenger protection.

Performance is not measured by how fast the bus will go, but rather by passenger comfort. The Allstar features straight side wall construction that maximizes passenger shoulder space and the widest aisle in the industry.

Durability does not come easily or quickly. The Allstar has been time tested for close to a decade. The 22,000-plus Starcraft buses on North America's roads offer a billion reasons why the Allstar has become a favorite, and those reasons are called miles. The Allstar is engineered to accommodate a variety of seating arrangements including wheelchair accessibility and various storage options for luggage.

Starcraft Bus, a division of Forest River, Inc. is owned by Berkshire Hathaway, one of the most respected and secure companies in the industry. We continue to be the leader by providing value-packed performance, durability and safe transportation.



Allstar can also be equipped with optional rear wheelchair accessibility

► Allstar Features

Features to Meet Your Specific Needs



Optional high-back seats, upholstery, padded cloth walls and ceiling, and overhead luggage racks



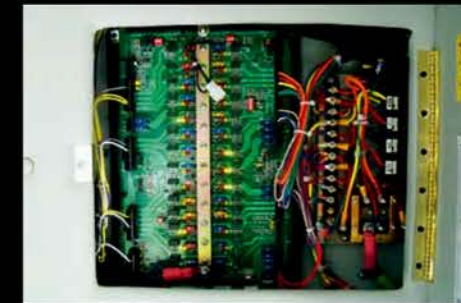
Driver's switch panel conveniently located within view of the road and not on the engine cover



Optional double wheelchair door with top mounted gas shocks to hold door open in windy conditions



Optional mid-back seats, padded vinyl walls and ceiling, and wheelchair accessible



Printed electrical circuit board with LED trouble-shooting lights



Optional fiberglass rear cap

